

PRODUCT BROCHURE

# Steel City<sup>®</sup>

## 60W Series floor boxes for wood subfloors



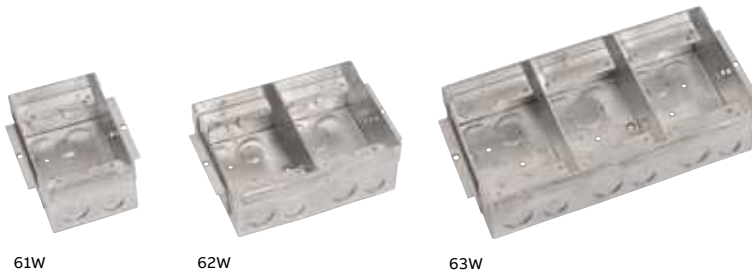
# Steel City® 60W series floor boxes

## For wood subfloors

Steel City 60W series floor boxes provide single- and multi-gang solutions for wood subfloor applications.



- Three-gang configuration for high-capacity, multi-service installations
- Larger KOs ( $\frac{3}{4}$ " and 1") have been added to each gang for application flexibility
- Adjustable mounting brackets allow for various finished floor material heights (hardwoods, tile or carpet)
- Ideal for open-layout residential applications, school auditoriums or commercial office space
- Voltage dividers are included with multi-gang boxes to accommodate power, voice and data services in the same floor box
- Full range of metallic and non-metallic cover and flange options



61W

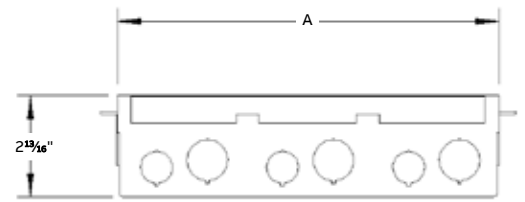
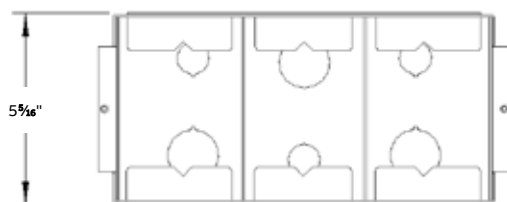
62W

63W

### Steel City 60W series floor boxes

Cat. no.	Description	Dimension A (in.)	Knock-outs (in.)	Std. pkg. qty.	UPC no.
61W	1-Gang floor box for wood subfloors	$3\frac{13}{16}$	Ends: (2) $\frac{1}{2}$ , (2) $\frac{3}{4}$ Bottom: (1) $\frac{1}{2}$ , (1) 1	1	785991-61555
62W	2-Gang floor box for wood subfloors	$7\frac{1}{16}$	Ends: (4) $\frac{1}{2}$ , (4) $\frac{3}{4}$ Bottom: (2) $\frac{1}{2}$ , (2) 1	1	785991-61556
63W	3-Gang floor box for wood subfloors	$10\frac{3}{4}$	Ends: (6) $\frac{1}{2}$ , (6) $\frac{3}{4}$ Bottom: (3) $\frac{1}{2}$ , (3) 1	1	785991-04893

### Diagrams



## P64 series metallic covers and carpets

For 60W series floor boxes



P64-DS



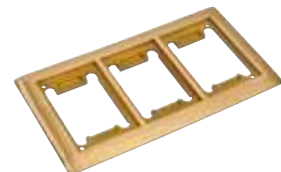
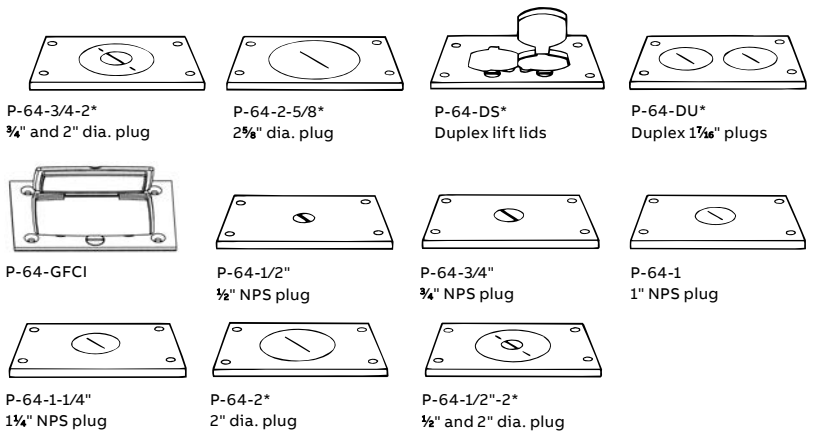
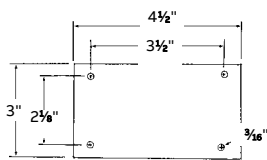
P64-1-AL

### P64 series metallic covers



Cat. no.	Description	Finish	Std. pkg. qty.	UPC no.
P-64-1/2	Cover plate 1/2" NPS plug	Brass	4	785991-63100
SP-P64-1/2-AL	Cover plate 1/2" NPS plug	Aluminum	4	785991-63102
P-64-3/4	Cover plate 3/4" NPS plug	Brass	4	785991-63106
P-64 3/4-AL	Cover plate 3/4" NPS plug	Aluminum	4	785991-63104
P-64-1	Cover plate 1" NPS plug	Brass	4	785991-63110
P-64-1-AL	Cover plate 1" NPS plug	Aluminum	4	785991-63108
P-64-1-1/4	Cover plate 1 1/4" NPS plug	Brass	4	785991-63114
P-64-1-1/4-AL	Cover plate 1 1/4" NPS plug	Aluminum	4	785991-63112
P-64-2	Cover plate 2" UN plug	Brass	4	785991-63118
P-64-2-AL	Cover plate 2" UN plug	Aluminum	4	785991-63116
P-64-1/2-2	Cover plate 1/2" and 2" UN plug	Brass	4	785991-63122
P-64-1/2-2-AL	Cover plate 1/2" and 2" UN plug	Aluminum	4	785991-63120
P-64-3/4-2	Cover plate 3/4" and 2" UN plug	Brass	4	785991-63126
P-64-3/4-2-AL	Cover plate 3/4" and 2" UN plug	Aluminum	4	785991-63124
P-64-2-5/8	Cover plate 2 5/8" UN plug	Brass	4	785991-63130
P-64-2-5/8-AL	Cover plate 2 5/8" UN plug	Aluminum	4	785991-63128
P-64-DU	Cover plate duplex 1 7/16" plugs	Brass	4	785991-63131
P-64-DU-AL	Cover plate duplex 1 7/16" plugs	Aluminum	4	785991-63132
P-64-DS	Cover plate duplex lift lids	Brass	4	785991-63133
P-64-DS-AL	Cover plate duplex lift lids	Aluminum	4	785991-15389
P-64-GFCI	Cover plate GFCI lid	Brass	4	785991-01153
P-64-GFCI-AL	Cover plate GFCI lid	Aluminum	4	785991-03478

### Plate Dimensions



P64-3G-CP



P64-2G-CP-AL

### P64 series metallic carpet plates

For 60W series floor boxes



Cat. no.	Number of gangs	Outside dimension (in.)	Material	Std. pkg. qty.	UPC no.
P64-CP	1	4 5/8 x 6 1/8	Brass	4	785991-63140
P64-CP-AL	1	4 5/8 x 6 1/8	Aluminum	4	785991-63141
P64-2G-CP	2	7 5/8 x 6 1/8	Brass	4	785991-63143
P64-2G-CP-AL	2	7 5/8 x 6 1/8	Aluminum	4	785991-63144
P64-3G-CP	3	10 5/8 x 6 1/8	Brass	4	785991-63146
P64-3G-CP-AL	3	10 5/8 x 6 1/8	Aluminum	4	785991-63147

## P64P series non-metallic covers and carpet plates

For 60W series floor boxes



P64P-URC-GRY



P64P-URC-BGE



Duplex and GFCI inserts for universal covers

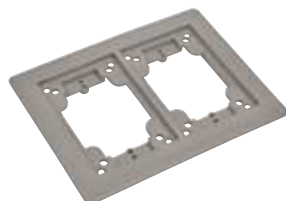


P64P-BP-BLK

### P64P series non-metallic covers



Cat. no.	Description	Color	Std. pkg. qty.	UPC no.
P64P-URC-BLK	Universal covers (duplex/GFCI)	Black	4	785991-05651
P64P-URC-GRY	Universal covers (duplex/GFCI)	Gray	4	785991-05652
P64P-URC-BGE	Universal covers (duplex/GFCI)	Beige	4	785991-05650
P64P-BP-BLK	Blank cover	Black	4	785991-05648
P64P-BP-GRY	Blank cover	Gray	4	785991-05649
P64P-BP-BGE	Blank cover	Beige	4	785991-05645



P64P-2G-CP-GRY

### P64P series non-metallic carpet plate



Cat. no.	Number of gangs	Description	Finish	Std. pkg. qty.	UPC no.
P64P-CP-BLK	1	Single-gang carpet plate	Black	4	785991-06758
P64P-CP-GRY	1	Single-gang carpet plate	Gray	4	785991-06757
P64P-CP-BGE	1	Single-gang carpet plate	Beige	4	785991-06759
P64P-2G-CP-BLK	2	Two-gang carpet plate	Black	4	785991-06761
P64P-2G-CP-GRY	2	Two-gang carpet plate	Gray	4	785991-06760
P64P-2G-CP-BGE	2	Two-gang carpet plate	Beige	4	785991-06762
P64P-3G-CP-BLK	3	Three-gang carpet plate	Black	4	785991-06764
P64P-3G-CP-GRY	3	Three-gang carpet plate	Gray	4	785991-06763
P64P-3G-CP-BGE	3	Three-gang carpet plate	Beige	4	785991-06765

**ABB Inc.**  
Electrification Products  
860 Ridge Lake Blvd.  
Memphis, TN 38120

Customer Service: 800-816-7809  
Technical Support: 888-862-3289

[abb.com/lowvoltage](http://abb.com/lowvoltage)

We reserve the right to make technical changes or modify the contents of this document without prior notice. With regard to purchase orders, the agreed particulars shall prevail. ABB Inc. does not accept any responsibility whatsoever for potential errors or possible lack of information in this document.

We reserve all rights in this document and in the subject matter and illustrations contained therein. Any reproduction or utilization of its contents – in whole or in parts – is forbidden without prior written consent of ABB Inc.  
Copyright © 2018 ABB  
All rights reserved